

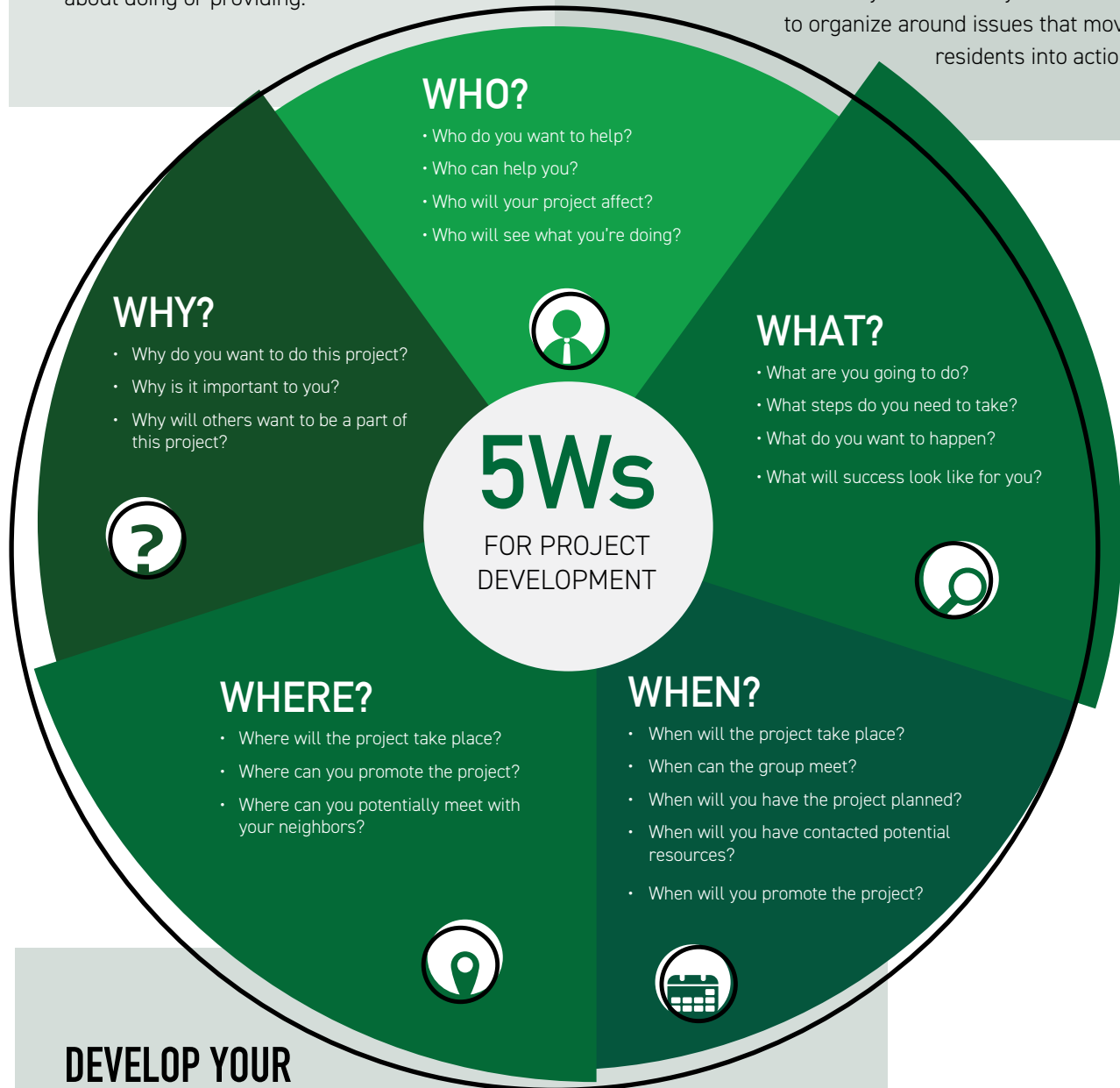
Basic PROJECT Development

TAKE INVENTORY OF RESIDENTS' SKILLS AND PASSIONS

It is far more effective to match what you are asking for with the things people are excited about doing or providing.

UTILIZE ASSET BASED COMMUNITY DEVELOPMENT

Identify assets that already exist in the community and how they can be used to organize around issues that move residents into action.



DEVELOP YOUR ELEVATOR SPEECH

Being ready to quickly and effectively explain your project to people will help you reach out to people and determine whether they are interested in helping out.



ONE OMAHA

Basic Project Development **WORKSHEET**

Who, what, when, where, and why are the basic questions you should answer when developing your community project. Being able to answer these questions will help to ensure a smooth transition from project ideation to implementation. They will also help you create an elevator speech to quickly and effectively explain your project to neighbors.

WHO?

-
-
-

WHAT?

-
-
-

WHEN?

-
-
-

WHERE?

-
-
-

WHY?

-
-
-

ELEVATOR SPEECH
